

HOLY CROSS CEMETERY

CLEVELAND, OHIO
NORTH PART

SECTION 11

SCALE 1"=20' G.C.A. FEB. 1963

11
N.P.

NOTE:
THE LOT NUMBER IS FOUND IN THE UPPER
RIGHT-HAND CORNER OF LOTS AS YOU FACE
THE SECTION AND IS INDICATED THUS \nearrow

LOCATION OF GRAVE MARKERS SHOWN THUS
ARROW INDICATES DIRECTION GRAVE MARKERS
WILL FACE.

ALL LOTS ARE 2 GRAVE LOTS EXCEPT WHERE
OTHERWISE NOTED.

ALL 3 GRAVE LOTS ARE 6' X 9'
ALL 3 GRAVE LOTS ARE 9' X 9'

LOT SUMMARY
1224 - 2 GRAVE LOTS
151 - 3 GRAVE LOTS
1373 - TOTAL LOTS



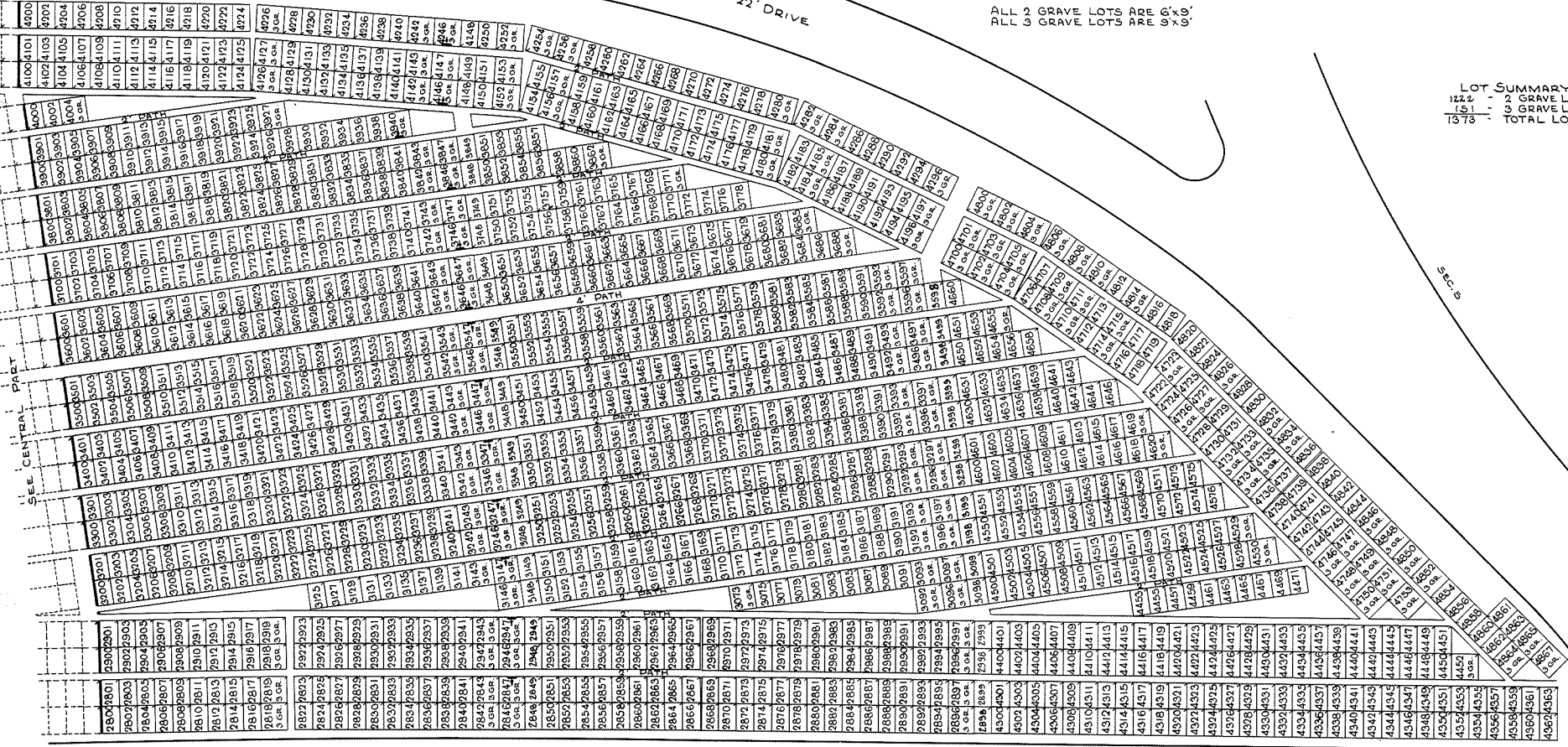
SEC. 10

22' DRIVE

SEC. 9

30' DRIVE

SEC. 12



SEC. 9

22' DRIVE



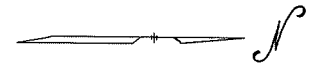
NOTE:
 THE LOT NUMBER IS FOUND IN THE UPPER
 RIGHT HAND CORNER OF LOTS AS YOU FACE
 THE SECTION AND IS INDICATED THUS ↗

LOCATION OF GRAVE MARKERS SHOWN THUS
 ARROW INDICATES DIRECTION GRAVE MARKERS
 WILL FACE.

ALL LOTS ARE 2 GRAVE LOTS EXCEPT WHERE
 OTHERWISE NOTED.

ALL 2 GRAVE LOTS ARE 6'x9'
 ALL 3 GRAVE LOTS ARE 9'x9'

LOT SUMMARY
 961 - 2 GRAVE LOTS
 149 - 3 GRAVE LOTS
 1110 - TOTAL LOTS



30' DRIVE

SEC. 12

HOLY CROSS CEMETERY
 CLEVELAND, OHIO
 CENTRAL PART
 SECTION 11

SCALE 1"=20' G.C.A. FEB. 1963

SEC. 9

22' DRIVE



NOTE:
 THE LOT NUMBER IS FOUND IN THE UPPER RIGHT HAND CORNER OF LOTS AS YOU FACE THE SECTION AND IS INDICATED THUS. []
 LOCATION OF GRAVE MARKERS SHOWN THUS []
 ARROW INDICATES DIRECTION GRAVE MARKERS WILL FACE.

ALL LOTS ARE 2 GRAVE LOTS EXCEPT WHERE OTHERWISE NOTED.

ALL 2 GRAVE LOTS ARE 6'x9'
 ALL 3 GRAVE LOTS ARE 9'x9'

LOT SUMMARY
 723 - 2 GR. LOTS
 114 - 3 GR. LOTS
 837 - TOTAL LOTS

30' DRIVE

SEC. 12

HOLY CROSS CEMETERY
 CLEVELAND, OHIO
SOUTH PART
SECTION 11

SCALE 1"=20' G.C.A. FEB. 1963